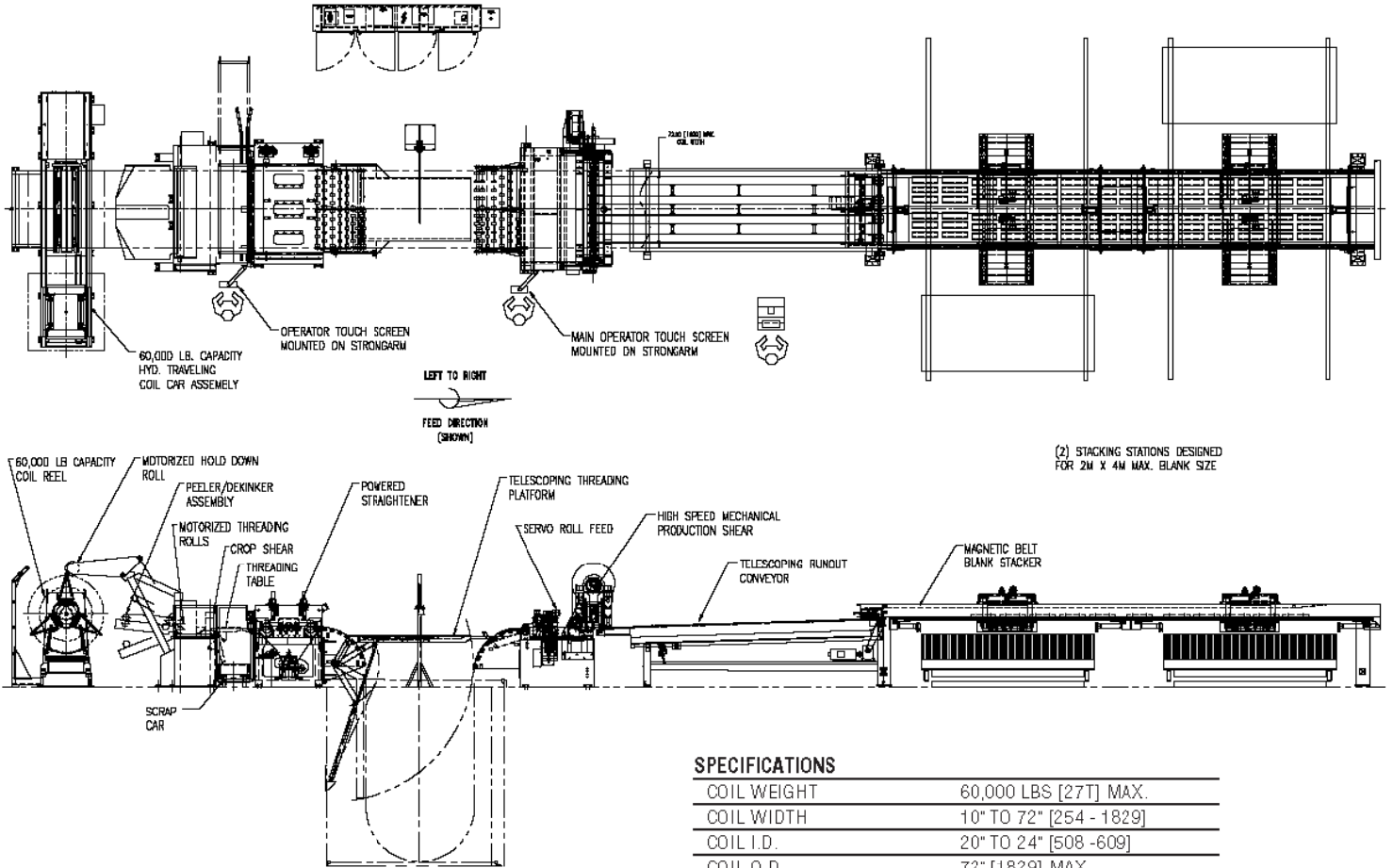


KIA Motors (Korea)

Cut-to-Length Line Automotive OEM High-Speed / Non-Marking Cut-to-Length Line



SPECIFICATIONS

COIL WEIGHT	60,000 LBS [27T] MAX.
COIL WIDTH	10" TO 72" [254 - 1829]
COIL I.D.	20" TO 24" [508 - 609]
COIL O.D.	72" [1829] MAX.
MATERIAL BEING RUN	MILD STEEL
MATERIAL THICKNESS	UP TO 0.13" [3.3]
FEED LENGTH ACCURACY	± .003" [.0762]
LINE SPEED	300 FPM [91 MPM]
FEED DIRECTION	LEFT TO RIGHT SHOWN



72" wide x 60,000# CTL
w/Magnetic Stacker